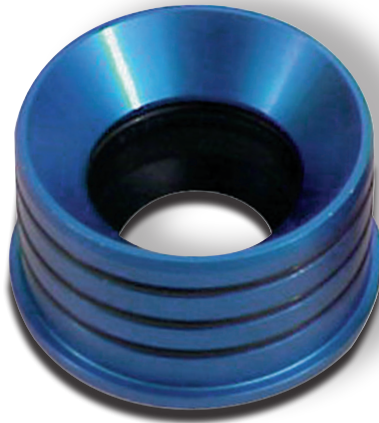




## Housing Seal Assembly Instructions



No lubrication of O-RING is needed. O-rings are of a special design to reduce the chance of cutting, but some simple precautions are needed to prevent cutting of the o-ring and/or damage to the aluminum seal housing. Make sure there are NO BURRS on the inner part of the axle tube. If a seal installation tool is not available, you can use any flat item, such as a cut of piece of a 2" x 4". It is recommended that you grease the axle spline area when installing the axle through the seal to prevent possible damage to the seal.

NOTE: This part does not fit stock 9" Ford Rear End Housing.